

# The Rise of AI for EO

AI4Copernicus – Namur, 17 Sep 2019

[pierre.philippe.mathieu@esa.int](mailto:pierre.philippe.mathieu@esa.int)



# Earth Macroscope





# ESA Earth Observation



## Taking the Pulse of our Planet



ESA UNCLASSIFIED – For Official Use



European Space Agency

# EO Today



ESA UNCLASSIFIED – For Official Use

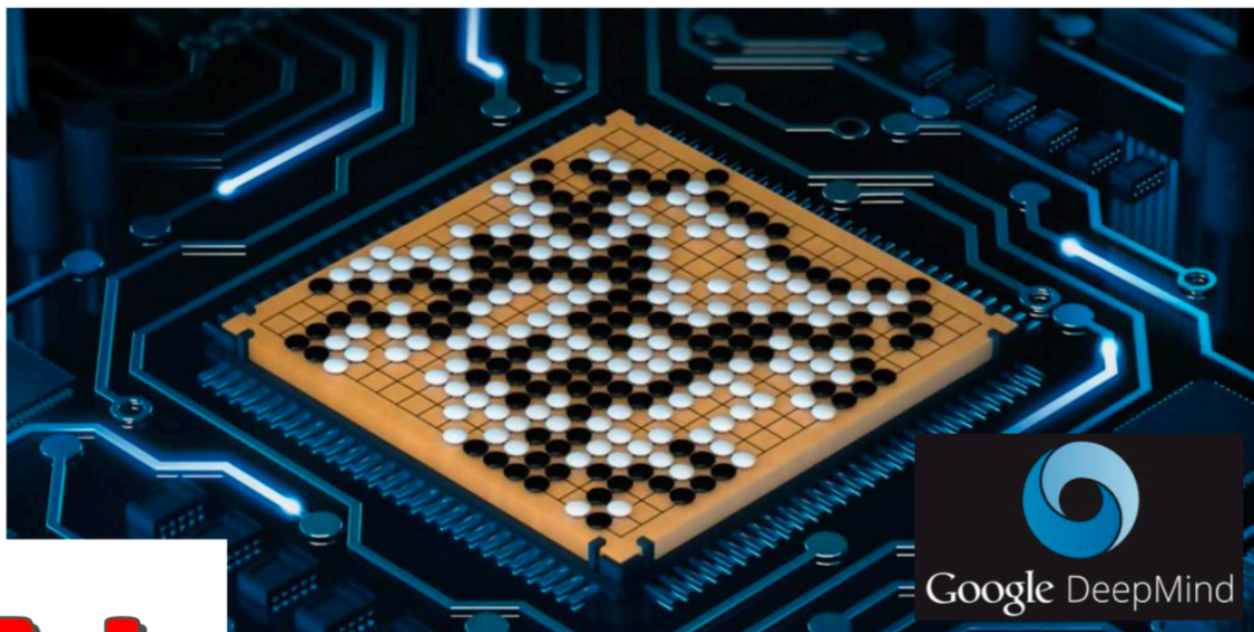


European Space Agency





Courtesy: F. Heintz



# AI

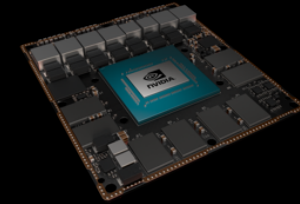
The new Electricity



# Why now? Big Data \* Big Computing \* Open Soft



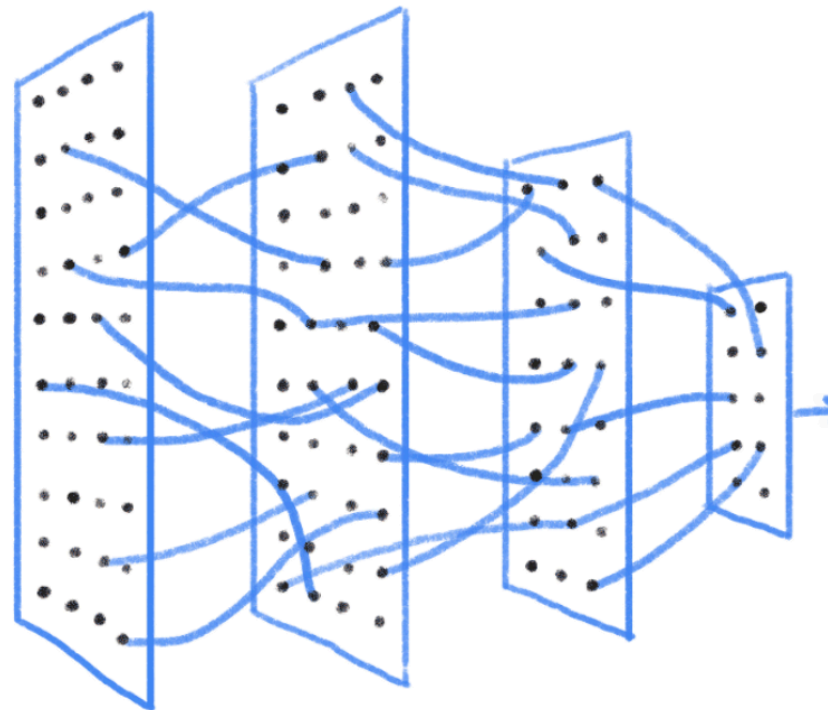
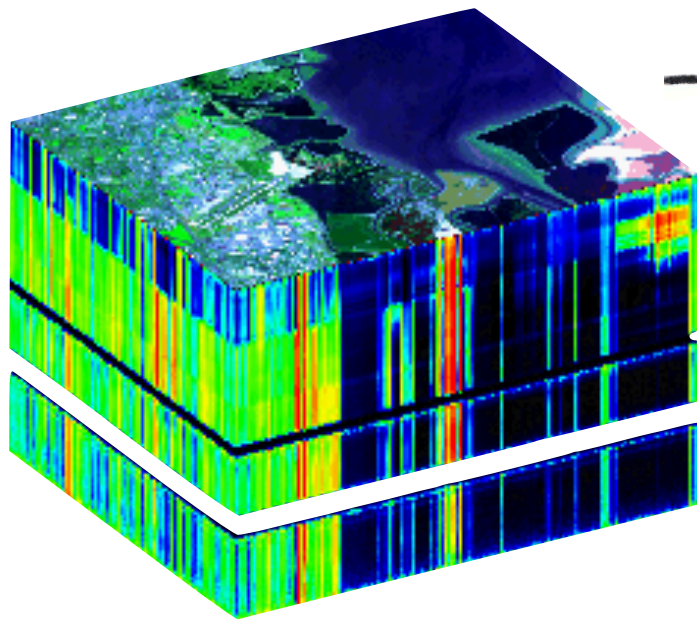
X



Issue of CONNECTIVITY



# Computer Vision for EO



## Feature Detection Classification

- Crops
- Oil Palm
- Ships
- ...

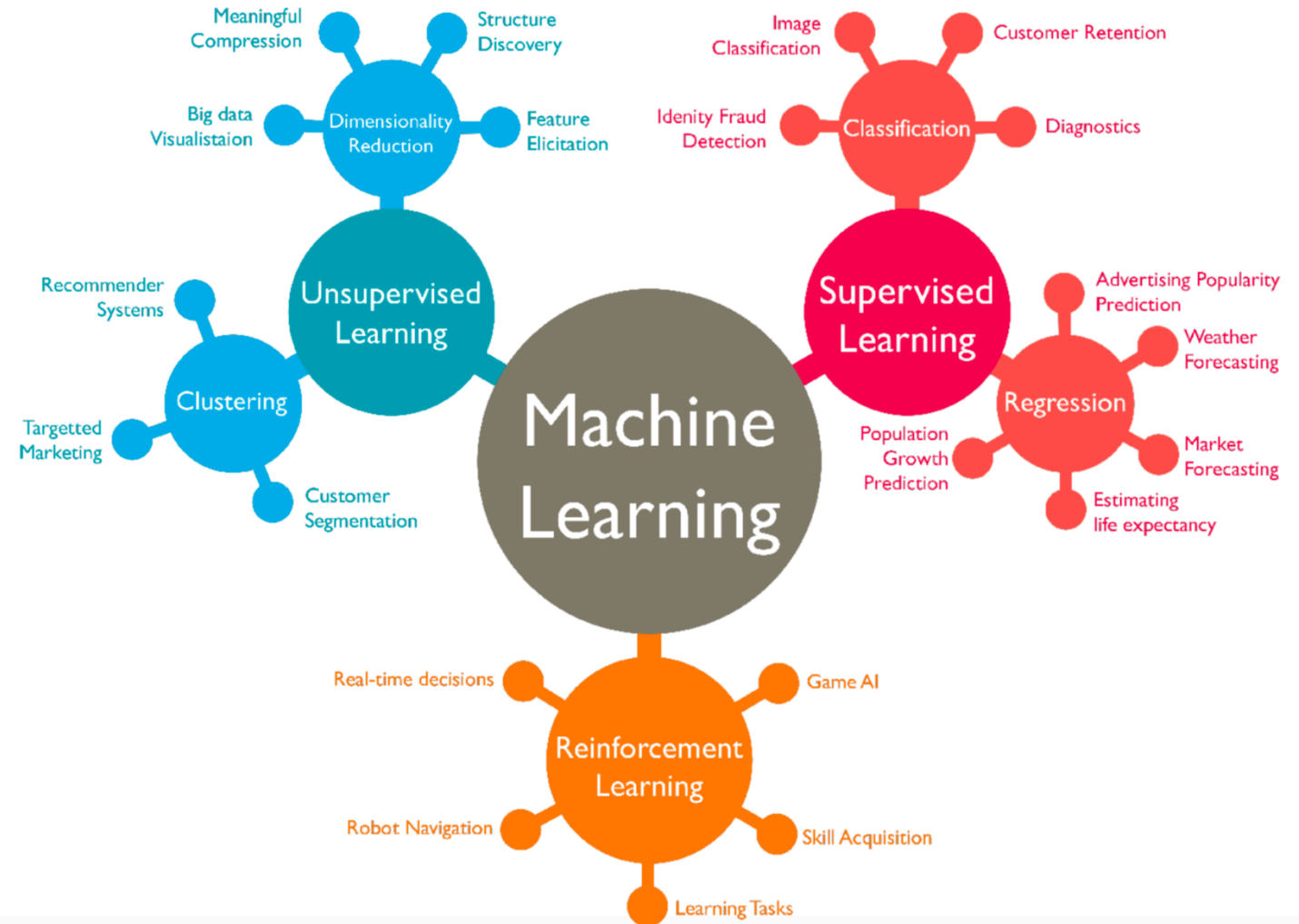
Open Software

## Need for a mixed Approach



*"All models are  
**wrong** but some  
are **useful**."*

George Box (1976)

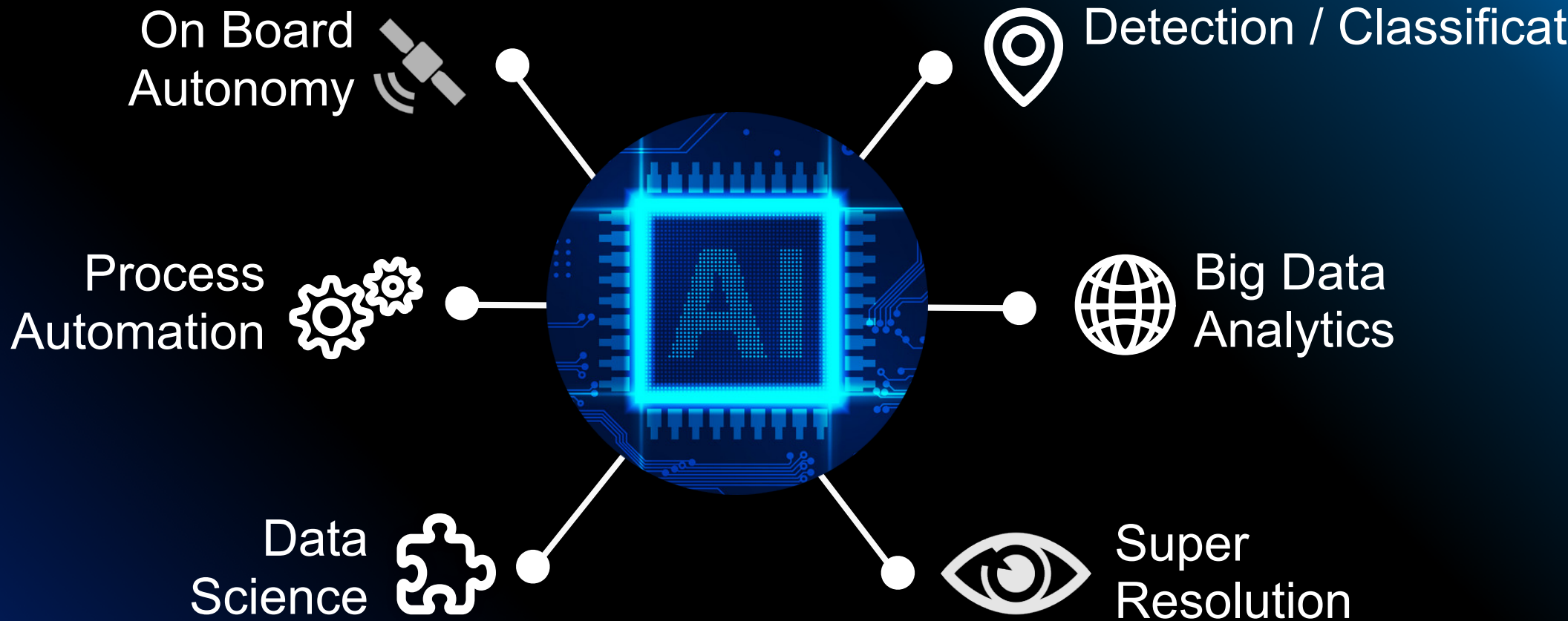


AlphaGo vs Lee Sedol, Mar 2016





# AI Opening a new Dimension for EO

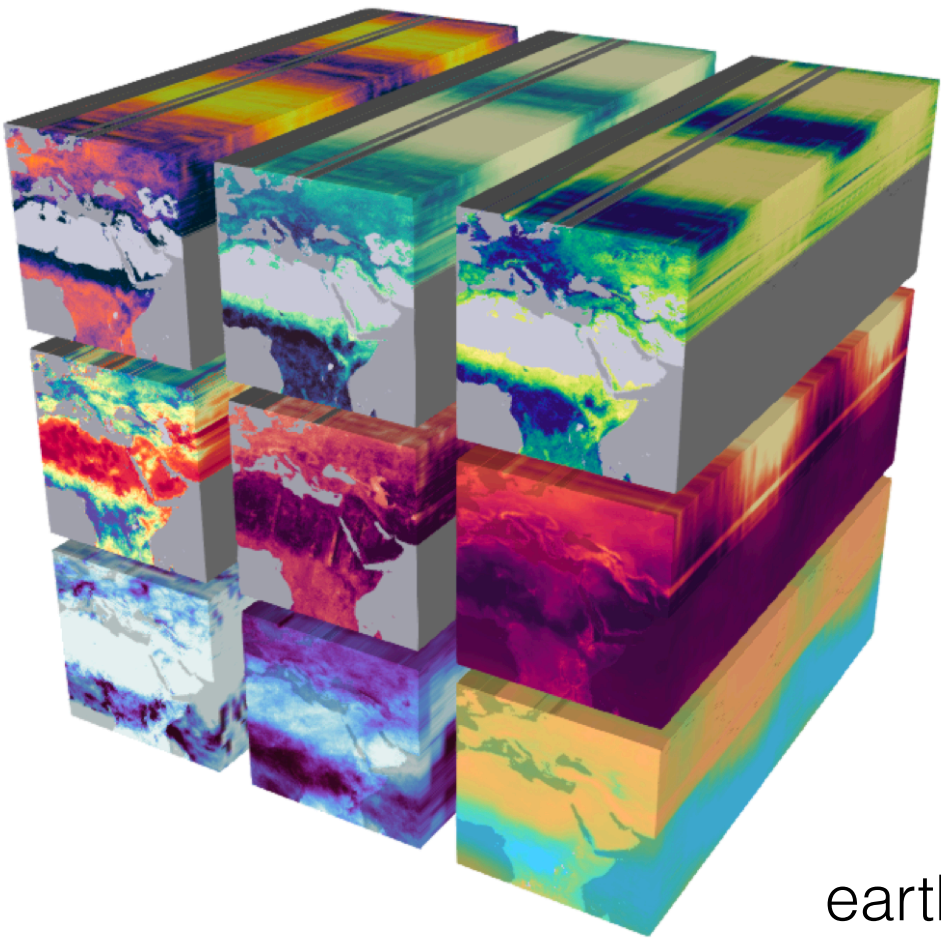


ESA UNCLASSIFIED – For Official Use



European Space Agency

# Earth in a Box - Earth System Data Lab - Ready Data Sets



[earthsystemdatalab.net](http://earthsystemdatalab.net)

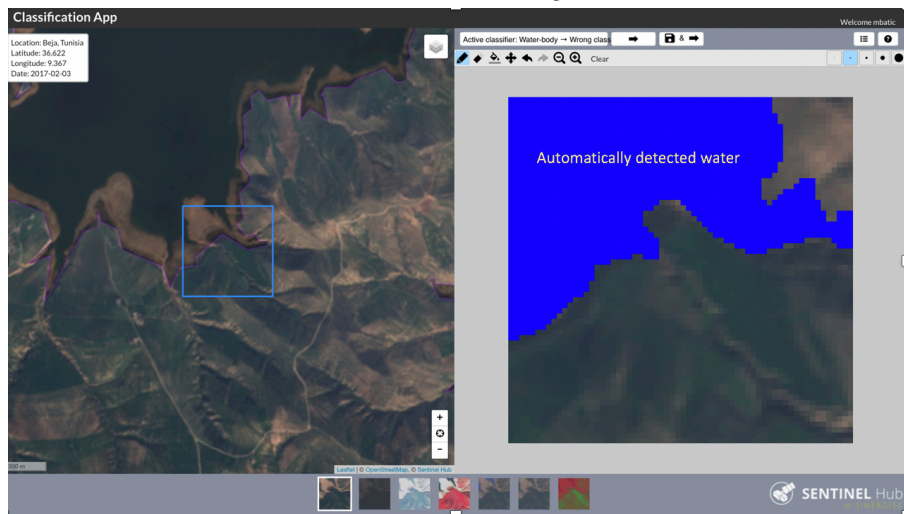
ESA UNCLASSIFIED - For Official Use





# AI Analysis Ready Data Set

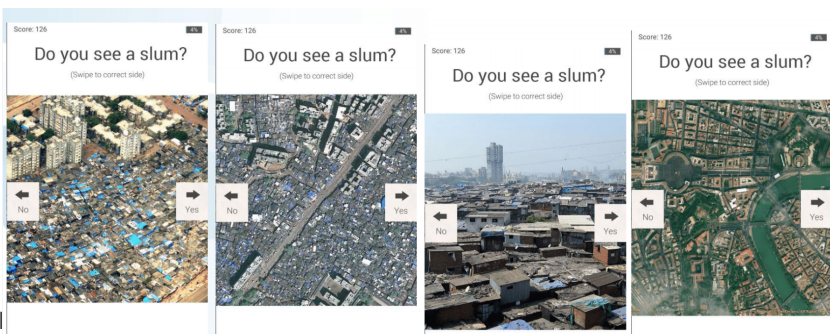
## S-2 Annotation - Query Planet



## VHR Annotation - PointEO



## Urban Annotation - Game.EO

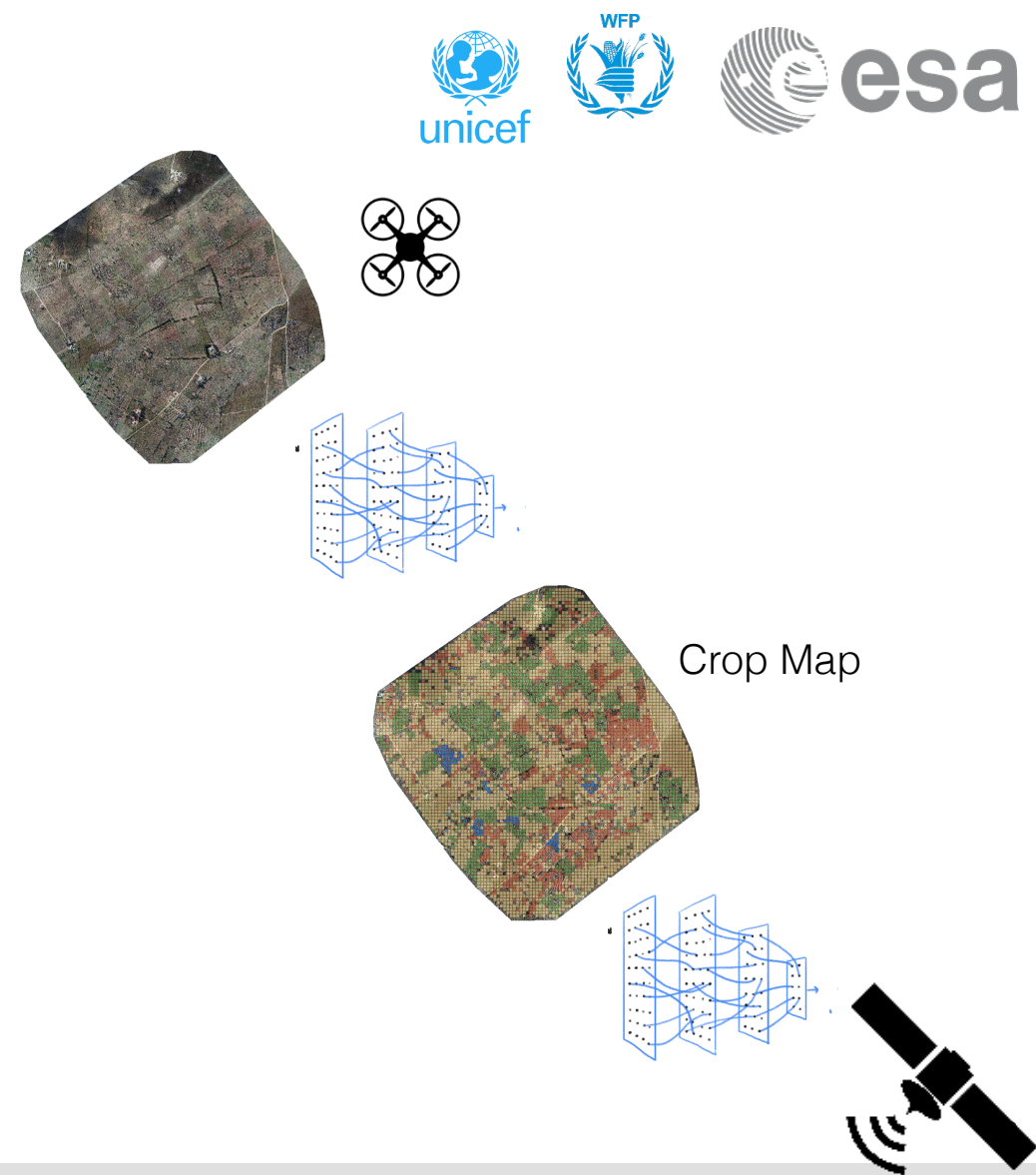
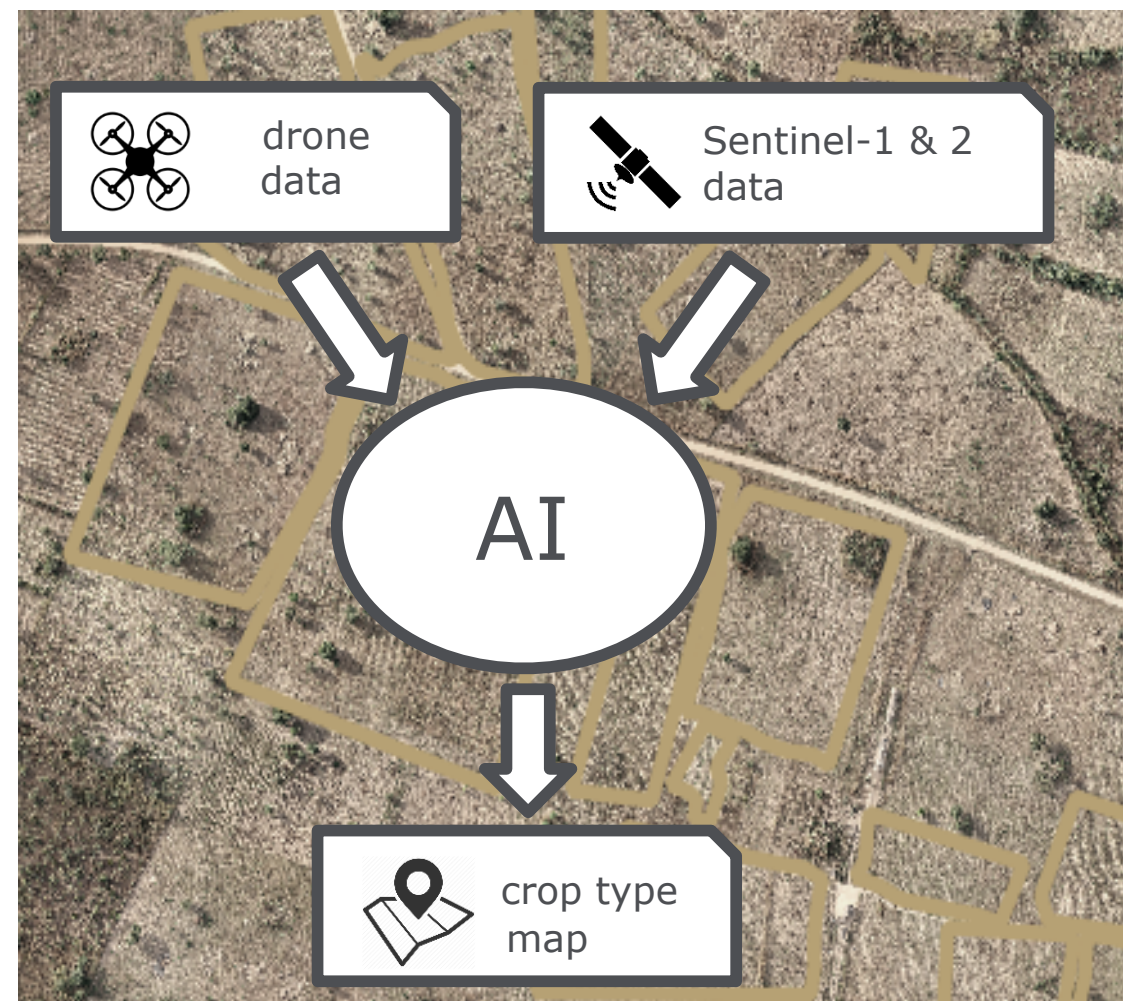


<https://eo-learn.readthedocs.io/en/latest/>

bigearth.net  
openstreetmap.org  
osmhome.org

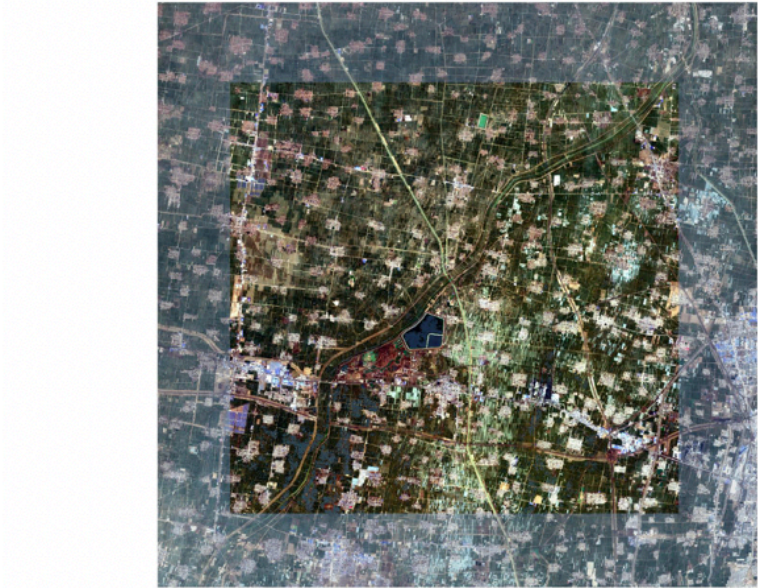
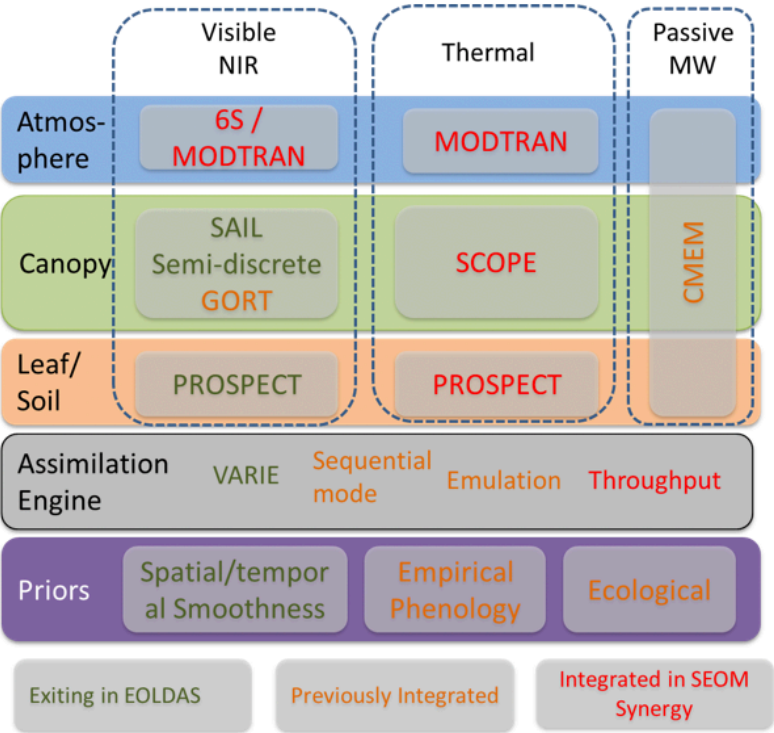
**Query  
Planet**

# Sprint Programme with UNICEF: Identifying crop type mapping in Malawi





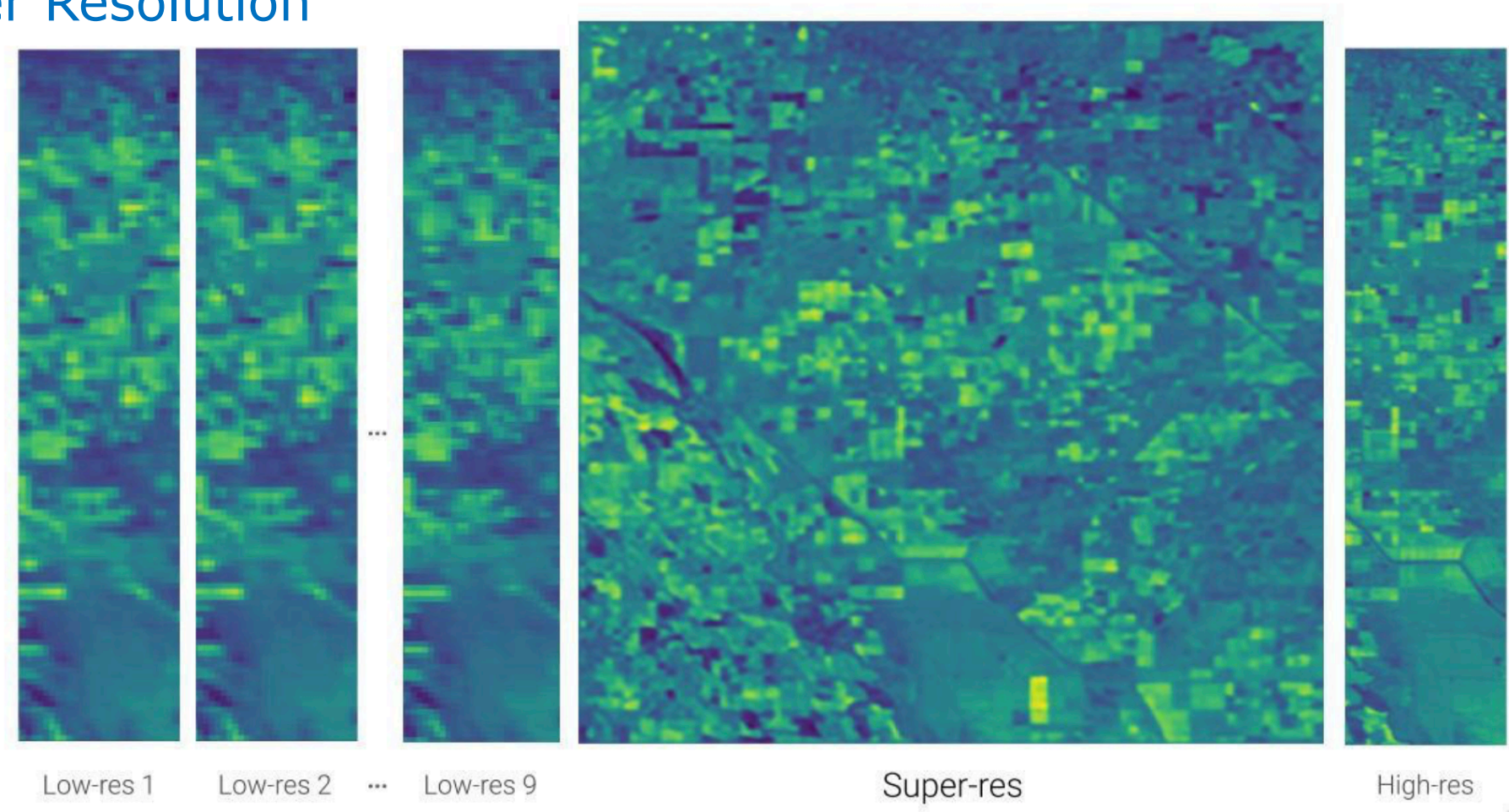
# Physics Aware AI



Atmospheric correction (centre part) of Sentinel-2 data over China with very high aerosol loading



# Super Resolution



Kelving platform, DeepSUM, Super-res: <https://bit.ly/2kNR8Sr>

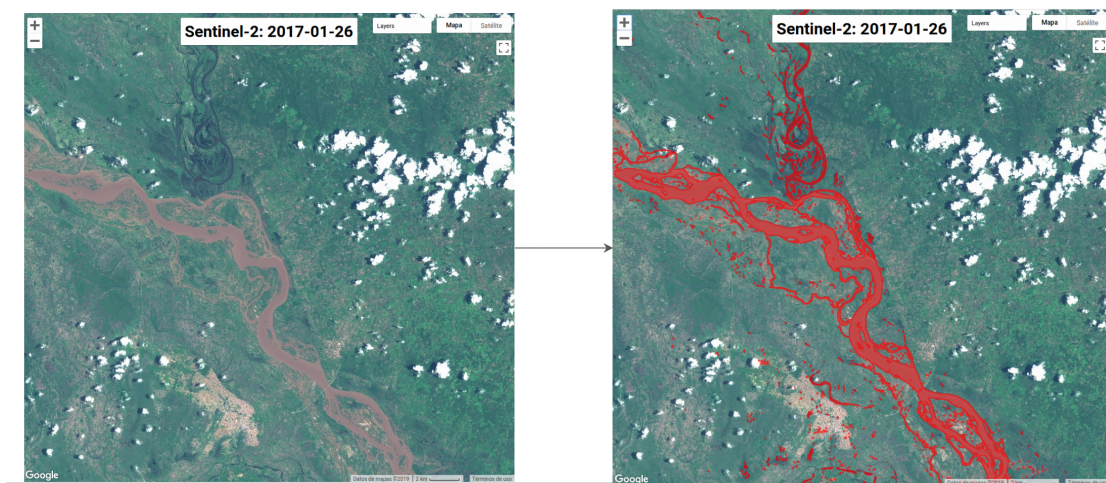
ESA UNCLASSIFIED - For Official Use



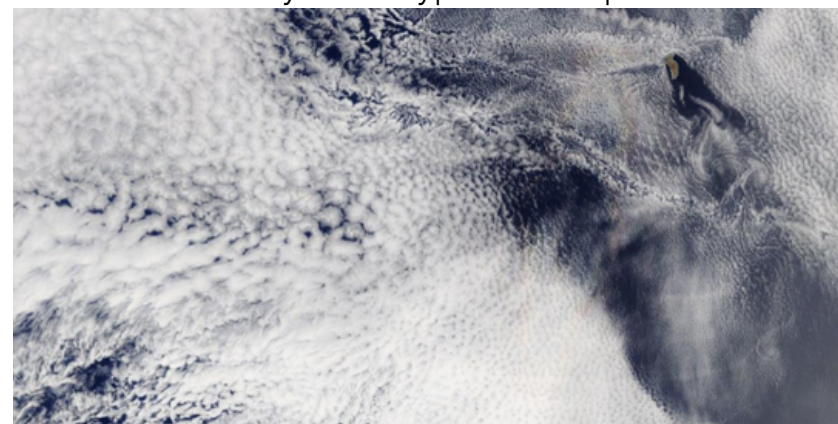




## Flood extent/Water segmentation (optical)



How many cloud types in this picture?



ESA UNCLASSIFIED - For Official Use

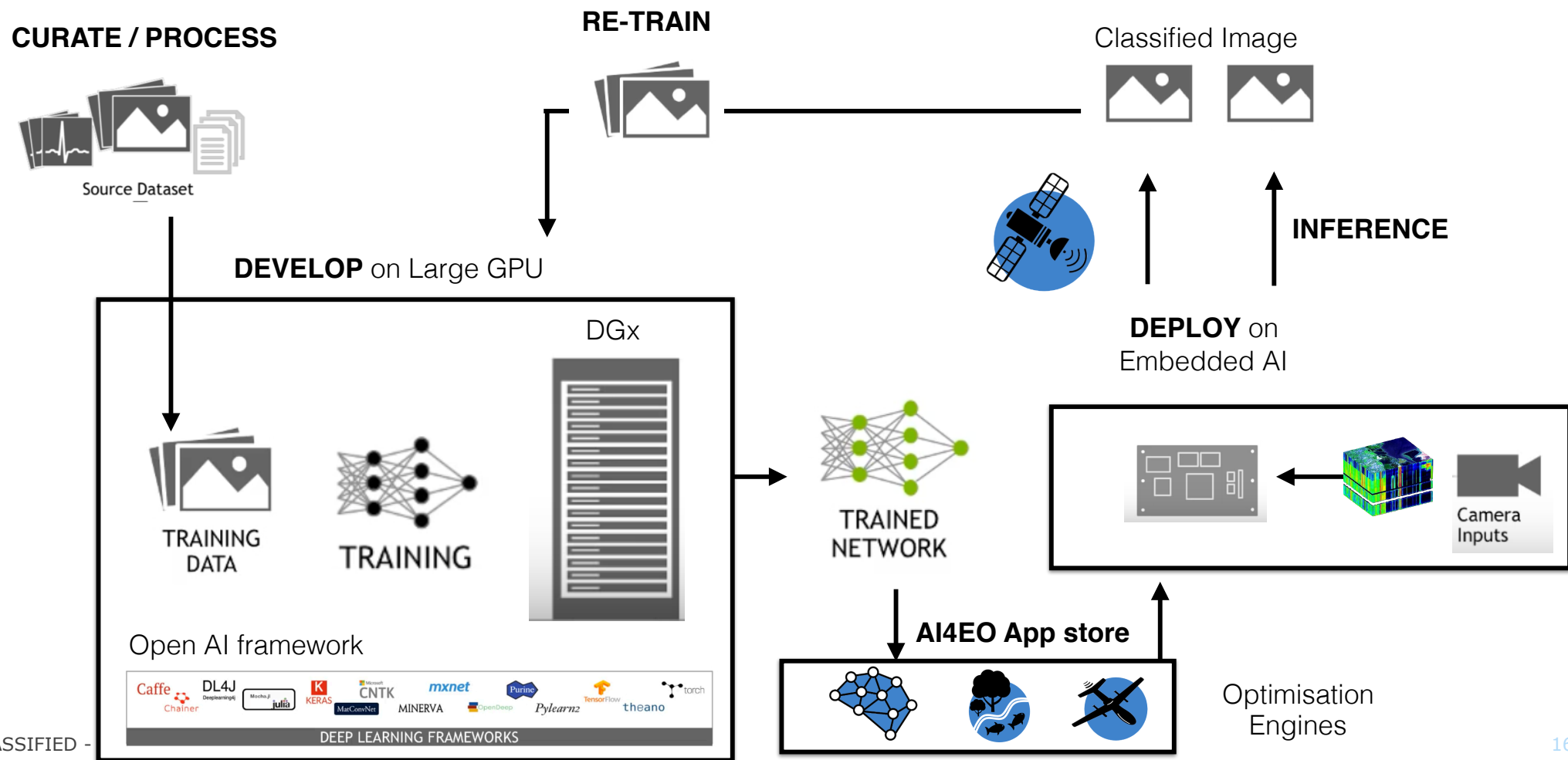
<https://fdleurope.org>



European Space Agency



# Adaptative Learning



ESA UNCLASSIFIED -

16



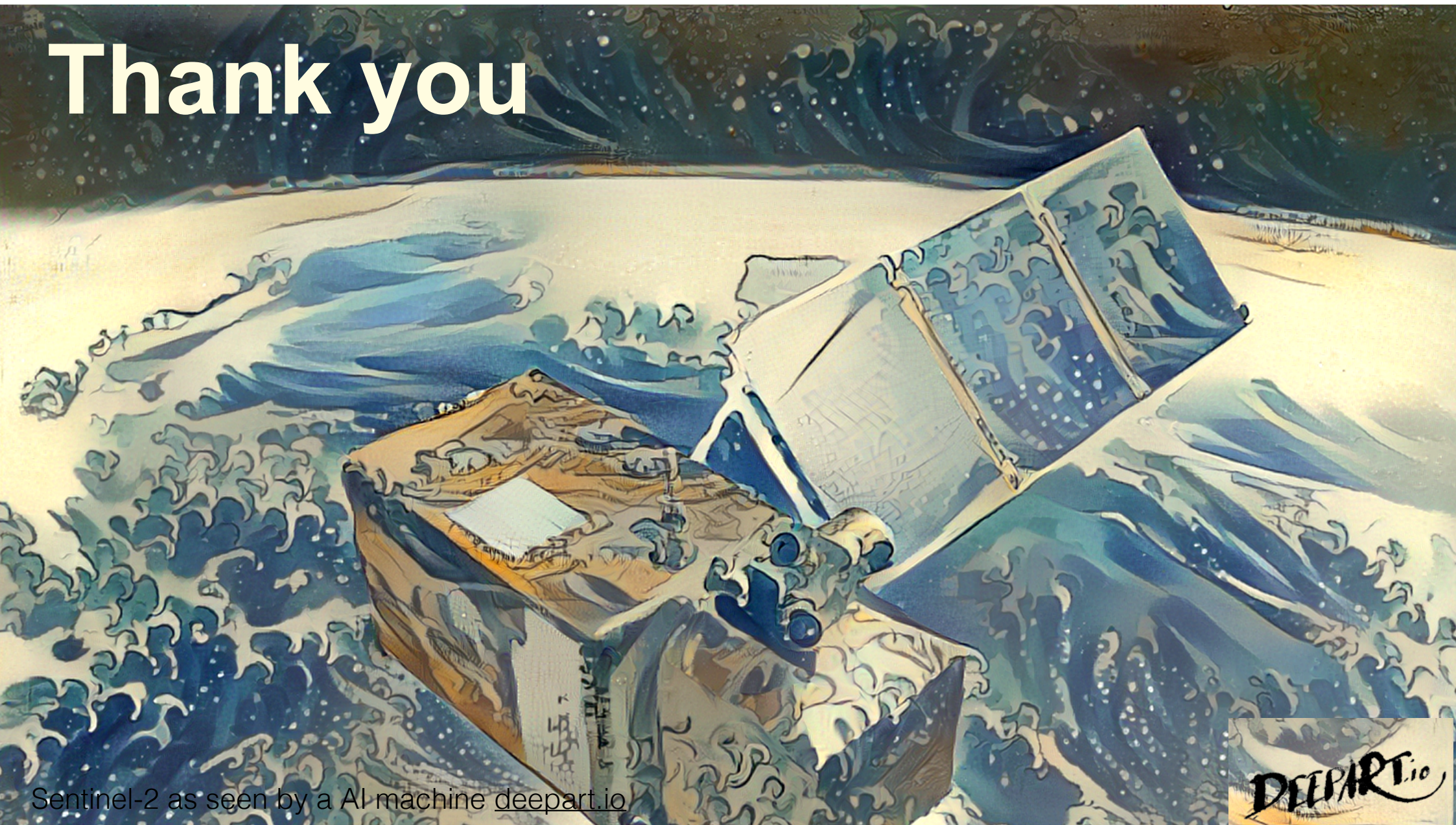
European Space Agency

# AI accelerates **Time to Insight** for Copernicus





# Thank you



Sentinel-2 as seen by a AI machine [deepart.io](https://deepart.io)





## → CAREER OPPORTUNITY @ ESA

# Research Fellow in Artificial Intelligence (AI) for Earth Observation at the $\Phi$ -lab (ESA/ESRIN)

Apply before 11 Oct 2019  
at <https://bit.ly/2kMLzDZ>  
(Ref ID 8827)

ESA  $\Phi$ -lab@ESRIN , [www.esa.int/eo](http://www.esa.int/eo)