

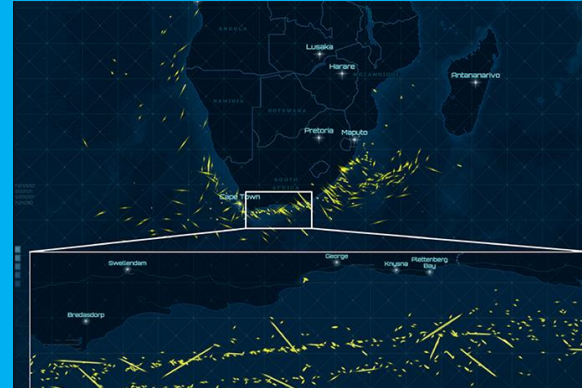


AI4COPERNICUS EVENT BELGIAN ROYAL MILITARY ACADEMY - BRUSSELS

AI & EO challenges for Security and defence



aerospace**lab**



FOR A BETTER USE OF AI WITH AVAILABLE DATA:
TOWARDS A GLOBAL WATCH CAPACITY





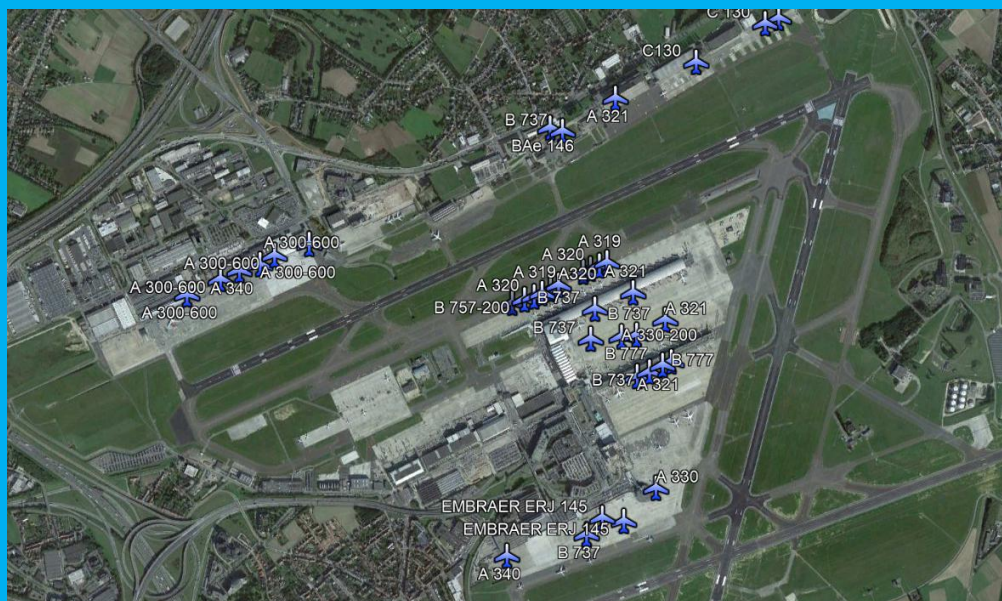
AI4COPERNICUS EVENT BELGIAN ROYAL MILITARY ACADEMY - BRUSSELS

AI & EO challenges for Security and defence



aerospace**lab**

FOR A BETTER USE OF AI WITH OUR AVAILABLE DATA:
TOWARDS A GLOBAL WATCH CAPACITY





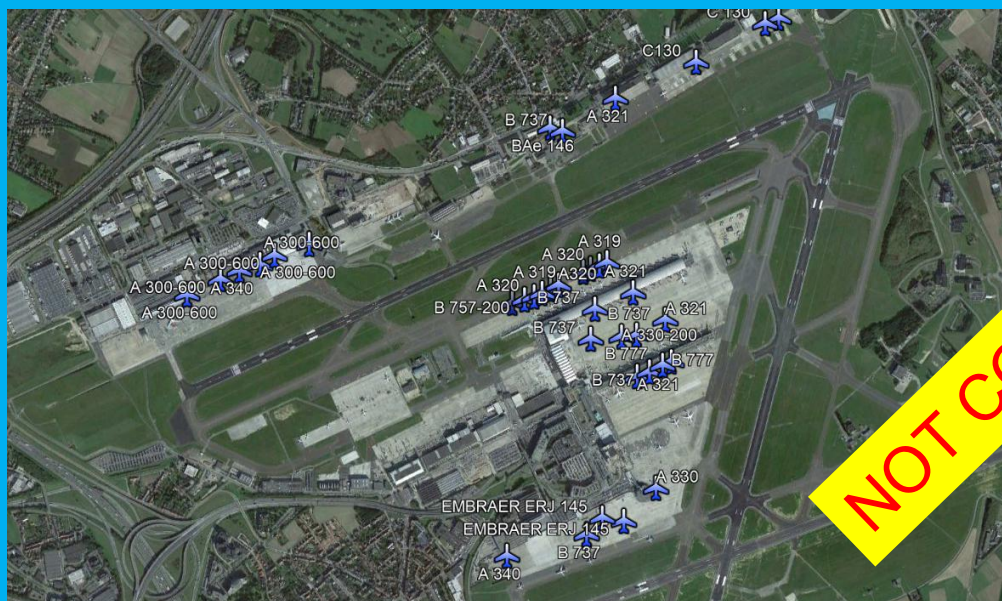
AI4COPERNICUS EVENT BELGIAN ROYAL MILITARY ACADEMY - BRUSSELS

AI & EO challenges for Security and defence



aerospacelab

FOR A BETTER USE OF AI WITH OUR AVAILABLE DATA:
TOWARDS A GLOBAL WATCH CAPACITY





AI4COPERNICUS EVENT BELGIAN ROYAL MILITARY ACADEMY - BRUSSELS

AI & EO challenges for Security and defence



aerospace**lab**

FOR A BETTER USE OF AI WITH OUR AVAILABLE DATA:
TOWARDS A GLOBAL WATCH CAPACITY



?

Human analysis required
because:

- Multi Int necessity
- Unusual fusion of informations
- Matrioshka 'type' intelligence analysis

> One week of full time analysis



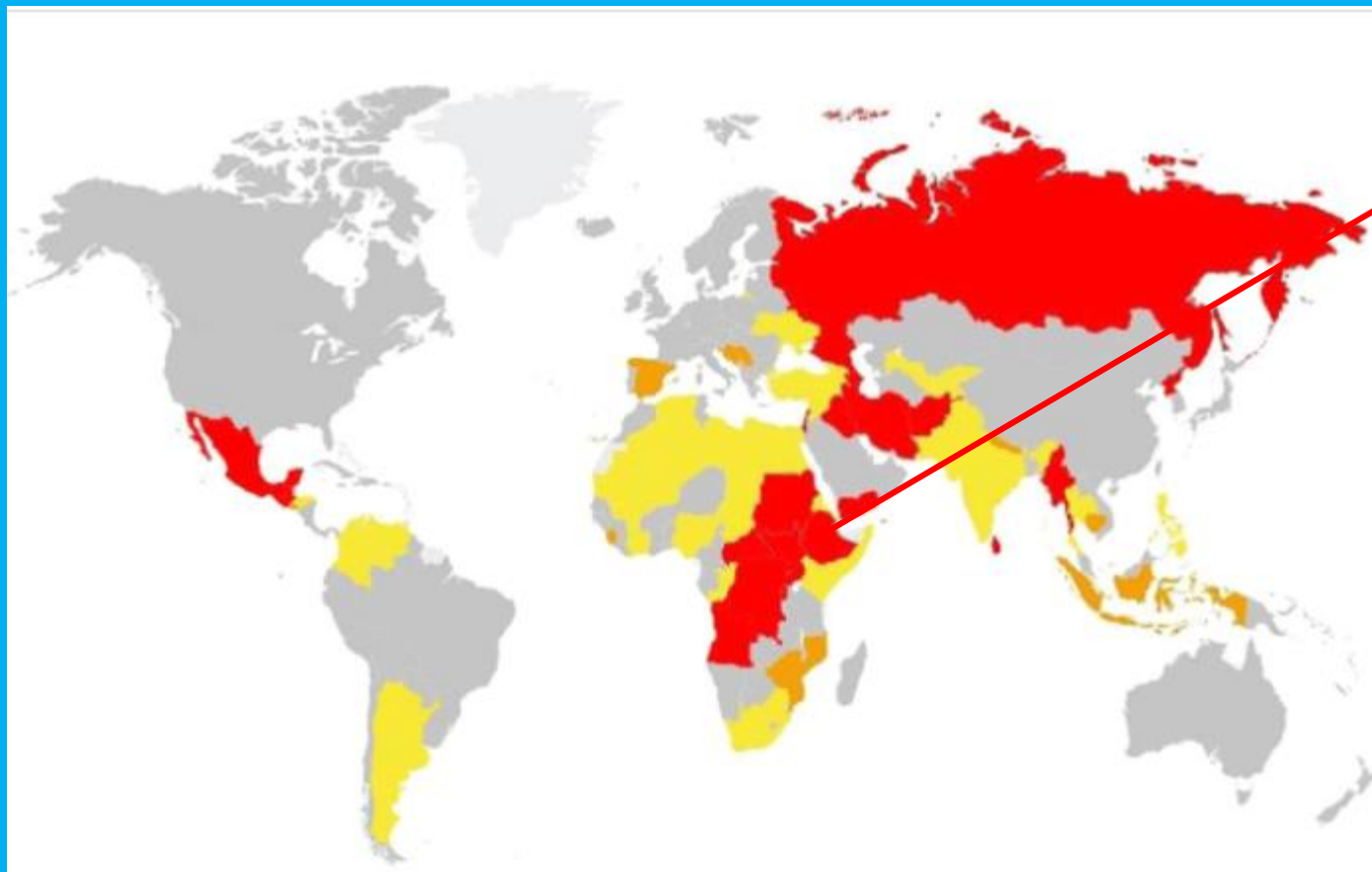
AI4COPERNICUS EVENT BELGIAN ROYAL MILITARY ACADEMY - BRUSSELS

AI & EO challenges for Security and defence



aerospace**lab**

FOR A BETTER USE OF AI WITH OUR AVAILABLE DATA:
TOWARDS A GLOBAL WATCH CAPACITY



Where will be the next ?
and
what kind?



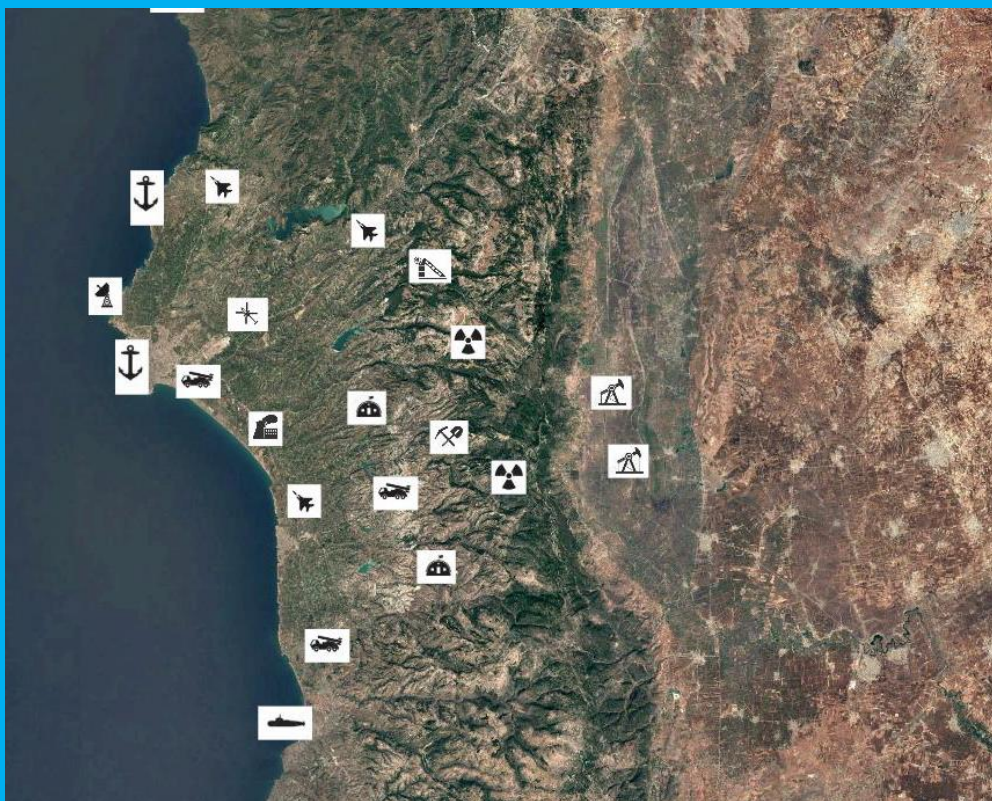
AI4COPERNICUS EVENT BELGIAN ROYAL MILITARY ACADEMY - BRUSSELS

AI & EO challenges for Security and defence



aerospace**lab**

FOR A BETTER USE OF AI WITH OUR AVAILABLE DATA:
TOWARDS A GLOBAL WATCH CAPACITY



Using wide coverage :

Localisation
of main strategic installations
in the area

Support of AI:

***- identification of installations
and of their main components***



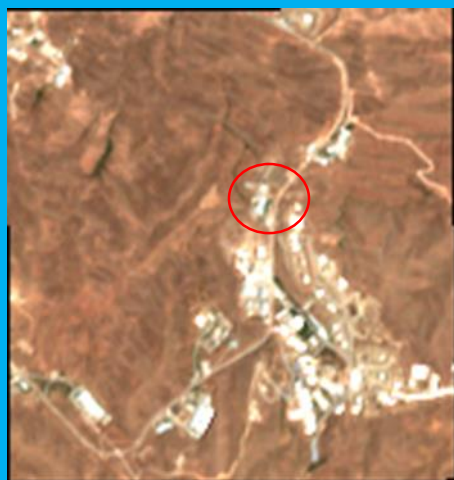
AI4COPERNICUS EVENT BELGIAN ROYAL MILITARY ACADEMY - BRUSSELS

AI & EO challenges for Security and defence



aerospace**lab**

FOR A BETTER USE OF AI WITH OUR AVAILABLE DATA:
TOWARDS A GLOBAL WATCH CAPACITY



21/06/2020



01/07/2020

Using time lapses:

- Changes detection

Support of AI:

- ***Pattern of life of installations***

SENTINEL 2 IMAGES



AI4COPERNICUS EVENT BELGIAN ROYAL MILITARY ACADEMY - BRUSSELS

AI & EO challenges for Security and defence



aerospace**lab**

FOR A BETTER USE OF AI WITH OUR AVAILABLE DATA:
TOWARDS A GLOBAL WATCH CAPACITY

Using Multi sources:

- Other images ,SIGINT, analysis , studies , events, news, social, networks
- Economic, social , ethnic, religious, education , anthropological, psychological



Support of AI:

- behaviour patterns of individuals , groups , governments , leaders

to **ANTICIPATE**

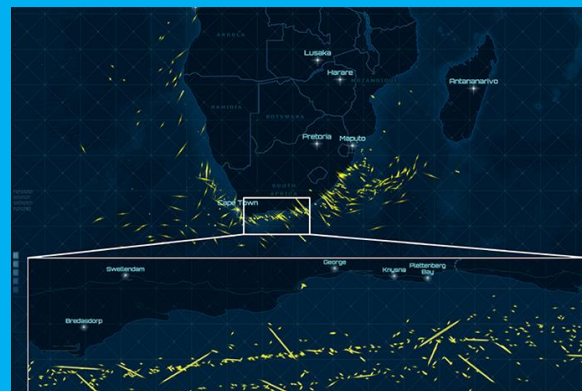


AI4COPERNICUS EVENT BELGIAN ROYAL MILITARY ACADEMY - BRUSSELS

AI & EO challenges for Security and defence



aerospace**lab**



REPORT IS FINE >>>> **ANTICIPATION IS BETTER**

